

EA70-PRO EPOXYACRYLATE ANCHOR

DESCRIPTION

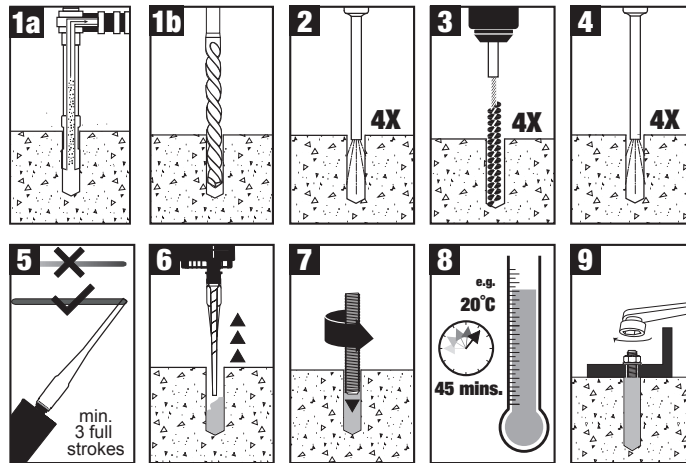
- ETAG 001 approved (ETA Option 7) for use in uncracked concrete
- ETAG 029 approved for use in solid and hollow masonry
- Approved for water filled drill holes
- Approved for overhead applications
- Installation down to -5°C
- Includes 2 x mixing nozzles per cartridge

PRODUCT OVERVIEW

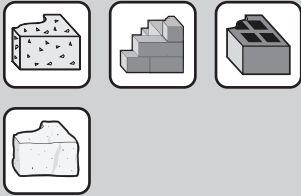


Cat No.	ETA	Cartridge Size [ml]	Box Qty	Carton Qty
DFC1320005	•	410ML	6	12

INSTALLATION INSTRUCTIONS - CONCRETE AND SOLID BRICK / MASONRY



MATERIALS

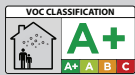


APPROVALS

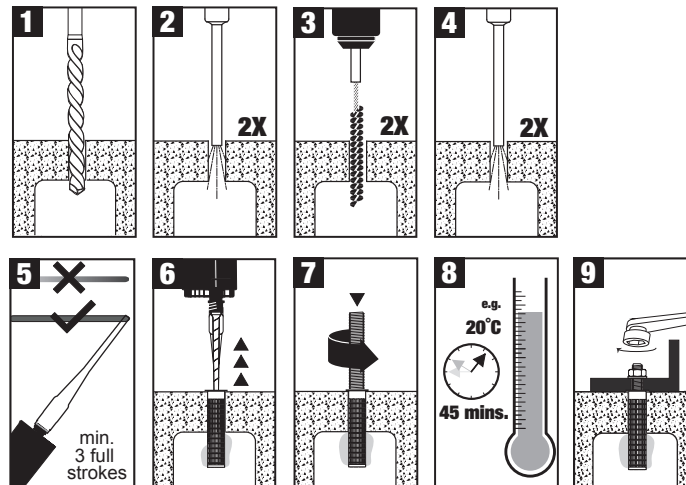
EUROPEAN TECHNICAL ASSESSMENT



EUROPEAN TECHNICAL ASSESSMENT



INSTALLATION INSTRUCTIONS - HOLLOW MASONRY, WITH SLEEVE



INSTALLATION PARAMETERS - THREADED ROD

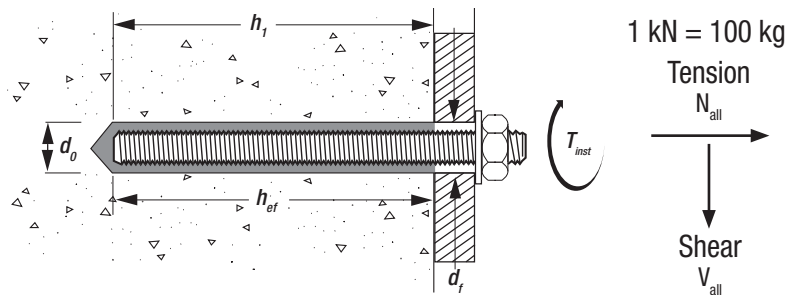
Parameter	Notation	Unit	EA70-PRO - Threaded rod					
			M8	M10	M12	M16	M20	M24
Anchor diameter	d	[mm]	8	10	12	16	20	24
Nominal drill bit diameter	d ₀	[mm]	10	12	14	18	24	28
Diameter of clearance hole in fixture	d _r	[mm]	9	12	14	18	22	26
Minimum embedment and drill hole depth	h _{ef,min} = h ₁	[mm]	60	60	70	80	90	96
Maximum embedment and drill hole depth	h _{ef,max} = h ₁	[mm]	160	200	240	320	400	480
Minimum member thickness	h _{min}	[mm]	h _{ef} + 30 mm ≥ 100 mm			h _{ef} + 2 · d ₀		
Minimum spacing	s _{min}	[mm]	40	50	60	80	100	120
Minimum edge distance	c _{min}	[mm]	40	50	60	80	100	120
Thickness of fixture	t _{fix}	[mm]	0 mm ≤ t _{fix} ≤ 1500 mm					
Maximum torque moment	T _{max}	[Nm]	10	20	40	80	120	160
Torque wrench socket size	S _w	[mm]	13	17	19	24	30	36

EA70-PRO EPOXYACRYLATE ANCHOR

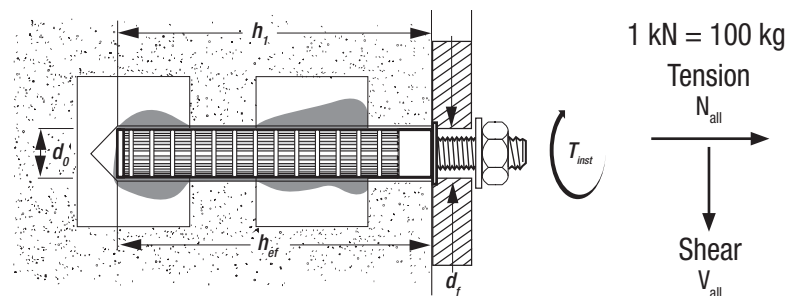
SETTING TIMES

Temperature °C	Gel Time	Curing time in dry concrete	Curing time in wet concrete
-5 to -1	90 min	6 h	12 h
0 to 4	45 min	3 h	6 h
5 to 9	25 min	2 h	4 h
10 to 14	20 min	100 min	200 min
14 to 19	15 min	80 min	160 min
20 to 29	6 min	45 min	90 min
30 to 34	4 min	25 min	50 min
35 to 40	2 min	20 min	40 min

INSTALLATION INFORMATION - THREADED ROD WITHOUT SLEEVE



INSTALLATION INFORMATION - THREADED ROD WITH SLEEVE



ALLOWABLE LOADS - UNCRACKED CONCRETE, THREADED ROD - EA70-PRO

C20/25

$$\frac{N_{Rk}}{\gamma_M \cdot \gamma_F} = N_{all}$$

$\gamma_F = 1.4$

8.8

40°C short term,
24°C long term

Size	Embedment depth h_{ef} [mm]	Single anchor located far from edge			Single anchor located close to edge		
		Edge distance	N_{all} [kN]	V_{all} [kN]	Edge distance	N_{all} [kN]	V_{all} [kN]
M8	80	≥ 120	6.8	8.4	≥ 40	4.2	2.6
M10	100	≥ 150	10.0	13.3	≥ 50	6.3	3.9
M12	120	≥ 180	14.4	19.3	≥ 60	9.0	5.3
M16	160	≥ 240	25.5	35.9	≥ 80	16.0	8.6
M20	200	≥ 300	39.3	56.0	≥ 100	25.5	12.6
M24	240	≥ 360	57.4	80.6	≥ 120	34.4	17.2

ALLOWABLE LOADS - MASONRY - EA70-PRO

Note: The allowable loads for masonry depends on the specific masonry type used. ETA-16-0390 includes several representative masonry types for which the allowable load ranges between 0.1 and 1.5 kN, depending on the masonry type but also the anchor diameter, load direction and other parameters. It is recommended to carry out onsite tests and evaluations by qualified personnel. Contact DeWALT for further assistance.