

SIGE S.p.A.
60020 Polverigi (AN) ITALY
tel +39 071 90 90 000 r.a. - fax +39 071 90 90 804
www.sige-spa.it info@sige-spa.it



WASTEBIN 450 lt.70

REV. 00.2016

F0IST00052

Prodotto ed assemblato in Italia / Made and assembled in Italy

CARATTERISTICHE • FEATURES

Pattumiera ad estrazione totale da 450 mm Lt. 70
Full extension wastebin 450 mm Lt. 70

MINUTERIA INTERNA • FITTINGS

n°12 **3,9x13** Vite autofilettante TC a croce / Self tapping screws TC

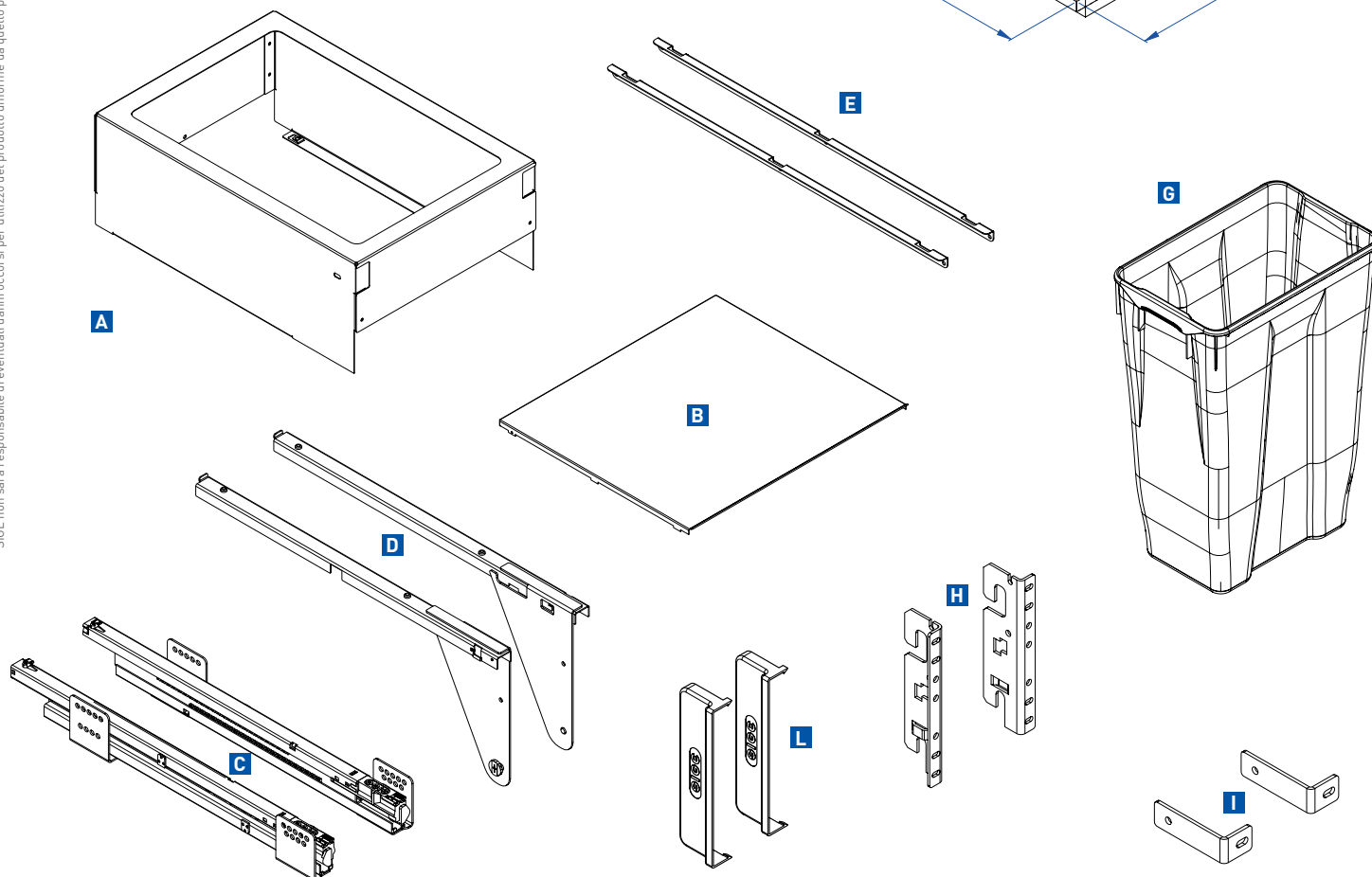
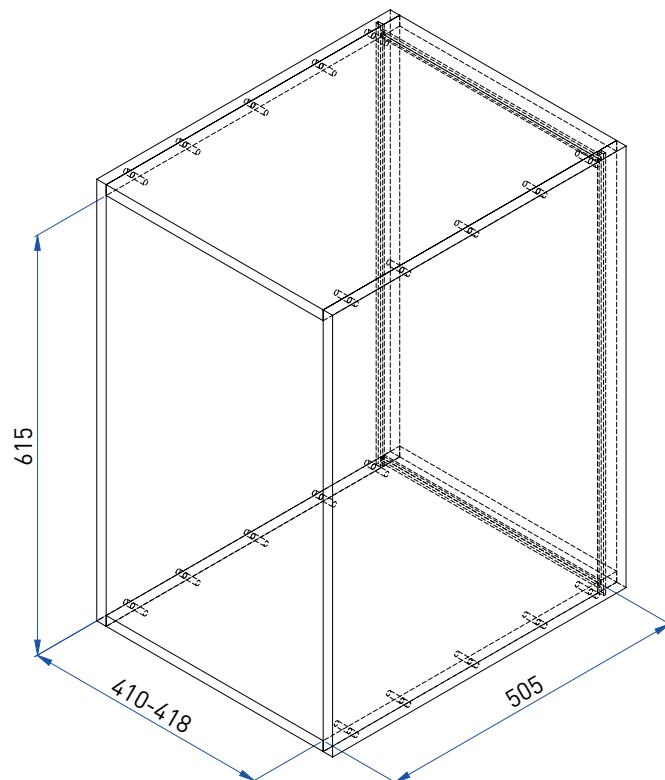
n°8 **4x16** Vite autofilettante TSP a croce/ Self tapping screws TSP

n°4 **M4x5** Vite cilindrica / Cylinder screw

COMPONENTI • PARTS

- A. Box metallico / Metal box
- B. Coperchio / Lid
- C. Kit guide Sige / Kit Sige slides
- D. Coppia carter guide / Kit slide carter
- E. Lamiera reggi coperchio / Metal plate
- G. Secchio grande 35 Lt. / Big bin Lt. 35
- H. Coppia attacco antina / Kit door fixing brackets
- I. Squadretti stabilizzatori antina / Door stabilising elements
- L. Cover attacco antina / Door Fixing cover

UTENSILERIA • TOOLS

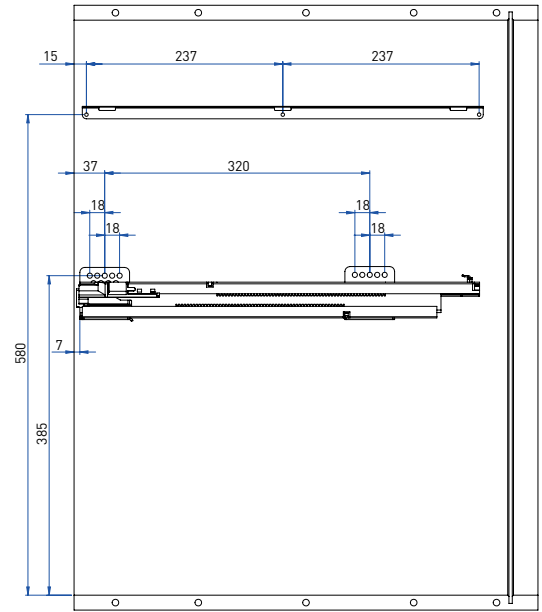
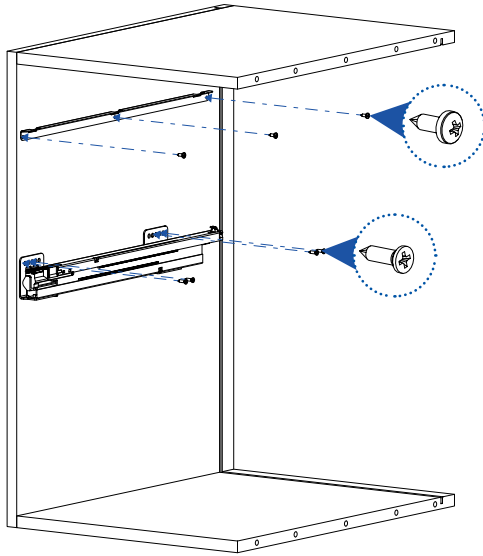




1

Fissare le guide C e le lamiere reggi coperchio E rispettando le quote.

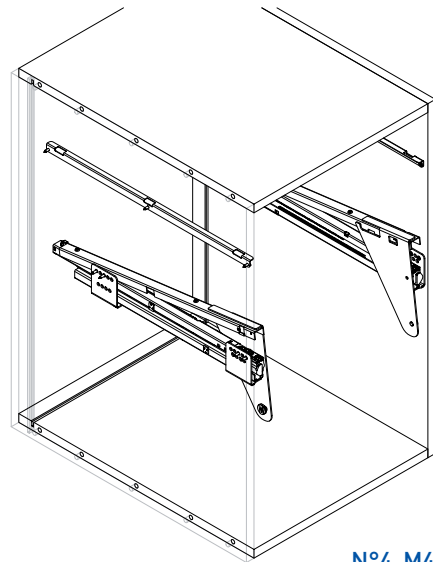
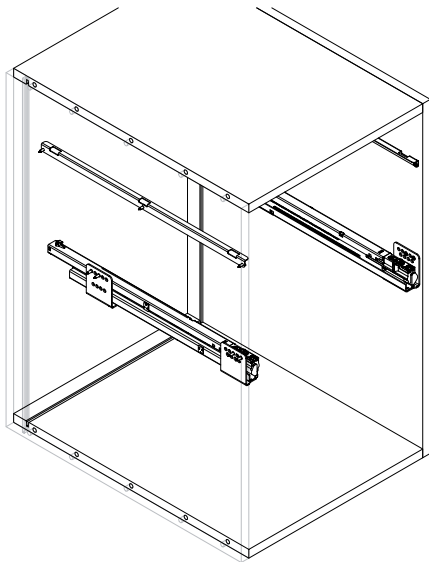
Fix the Sige slides C and the metal lid holder plate E respecting the quotes.



2

Inserire la coppia carter guide D nelle guide C.

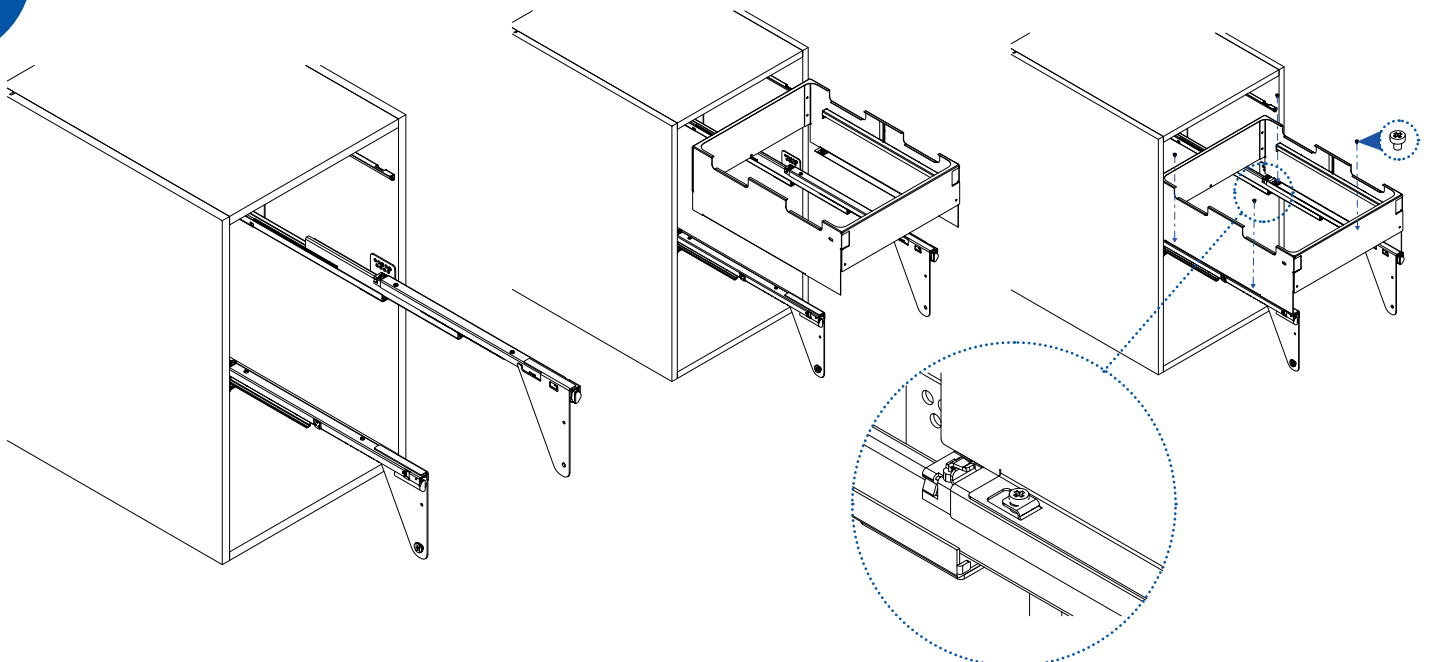
Put the kit slide carter D into the Sige slides C.



3

Avvitare il box metallico A nei carter guide D mediante le apposite viti.

Screw the metal box A into the kit slide carter D by using the specific provided screws.

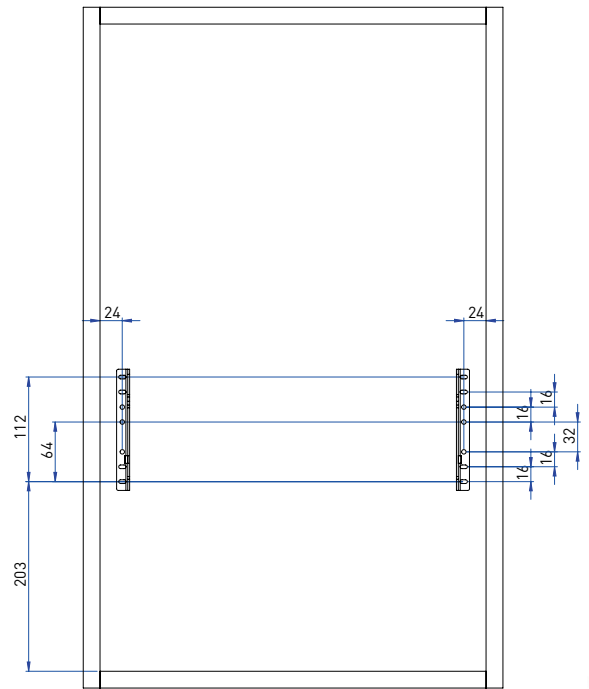
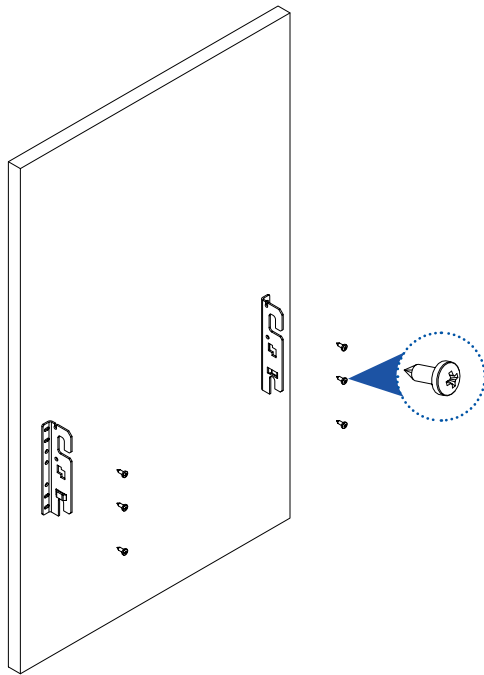




4

Fissare la coppia attacco antina H nell'anta, rispettando le quote.

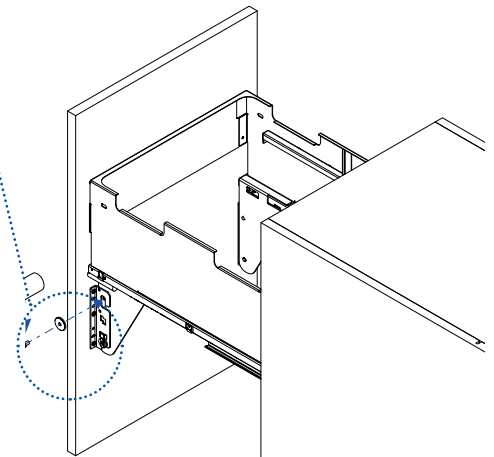
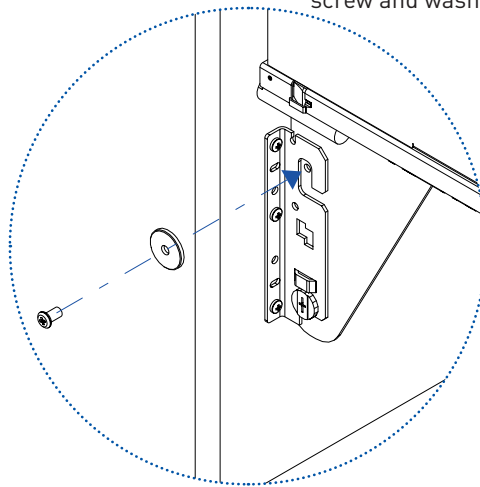
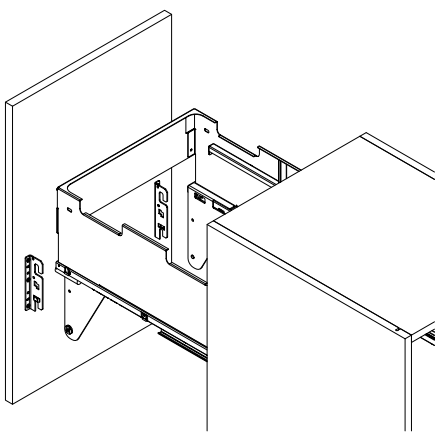
Assemble the kit door fixing brackets H along with the door respecting the quotes.



5

Inserire l'antina nei carter D e serrare il tutto a mezzo vite e rondella speciali.

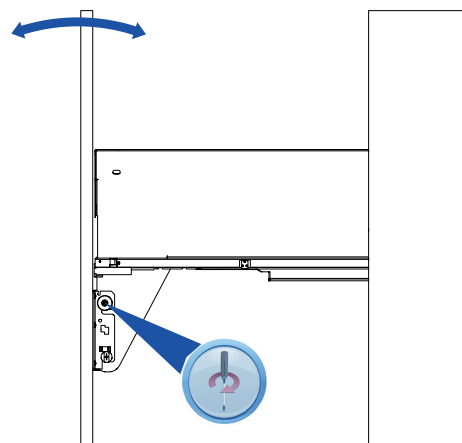
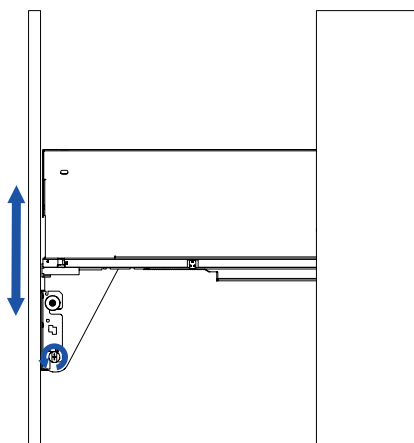
Put the door into the carter D and fix them by using the specific screw and washer.



6

Effettuare la regolazione dell'anta.

Adjust the furniture door.

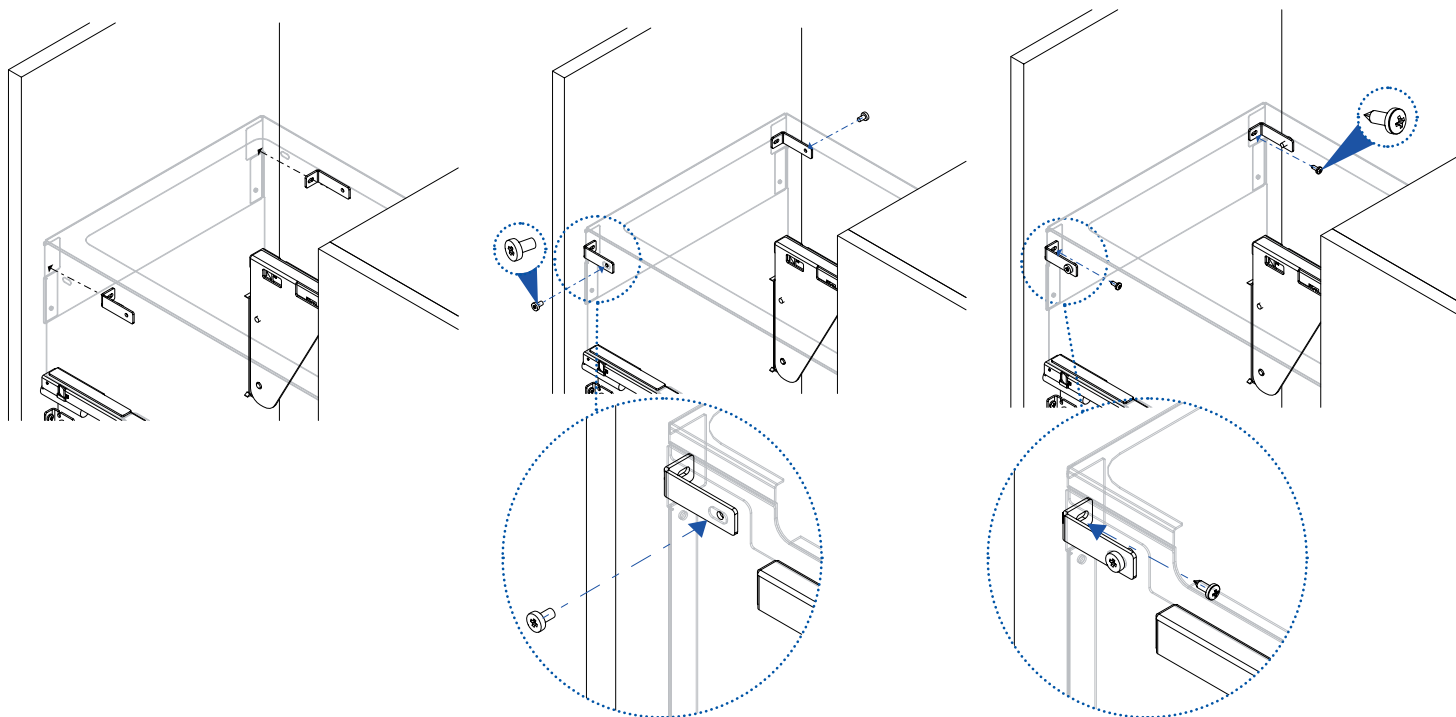




7

Fissare i squadretti stabilizzatori anta I come illustrato dalle foto.

Fix the door stabilising elements I as shown in the pictures.



8

Inserire il coperchio B nelle lamiere reggi coperchio E ed inserire le pattumiere F.

Put the lid B into the metal lid holder plate E and insert both the small and big bins F too.

