

LAMP.

POCKET DOOR SYSTEM



ALT-ST
New Series for
Up To 2400mm
Tall Doors!



*No more struggles
with sagging doors
again!*

► P.2

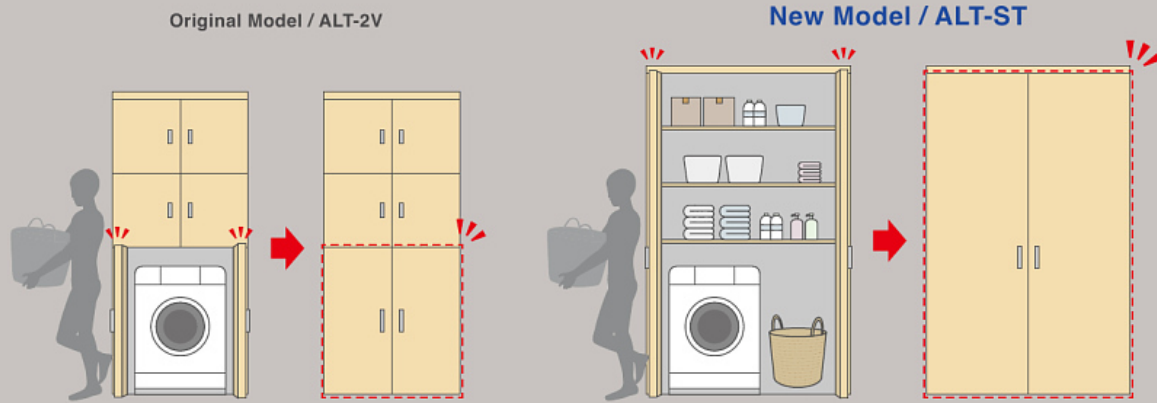
Max. 20kg



SUGATSUNE

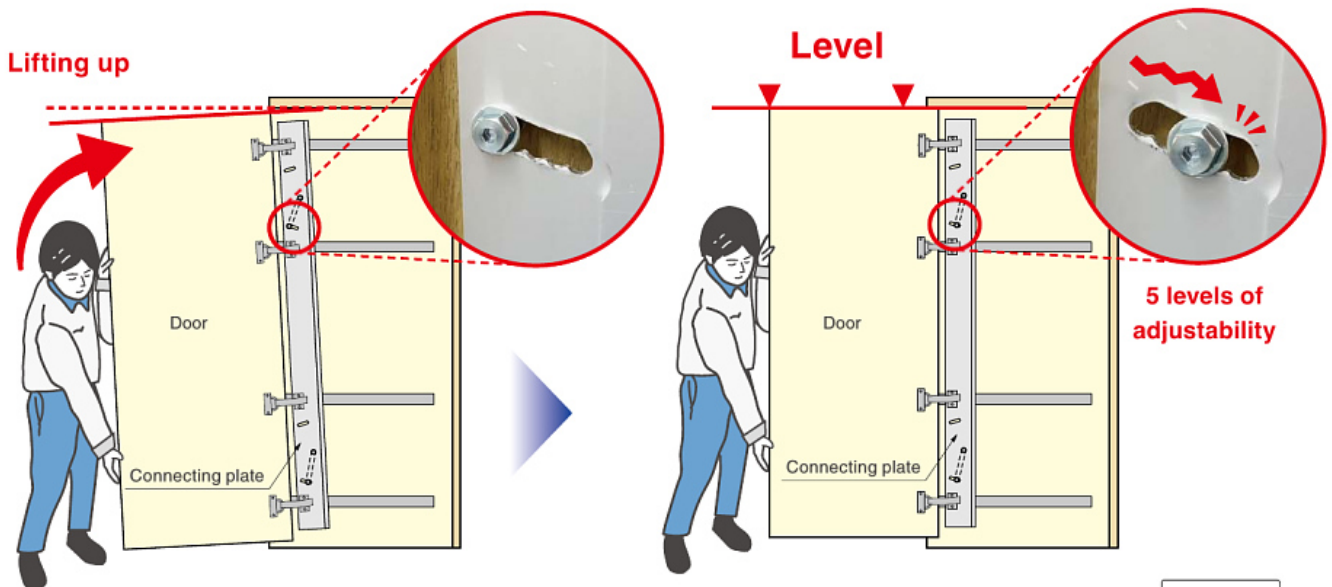
No.431

The new ALT-ST supports max. 20kg



New Anti-sagging Function

Door Angle Adjustability



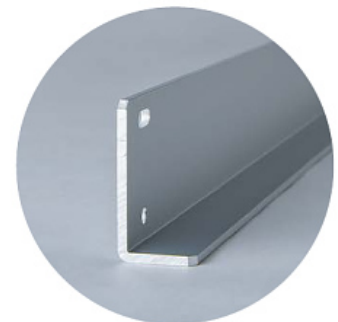
The ALT-ST features a new anti-sag function that allows you to easily set the angle of the door simply by lifting it during installation.

Video Link



Stronger "L-Shaped" Connecting Plate

The connecting plate, which bears the weight of the door, is L-shaped. This improves its rigidity and significantly reduces door sagging. The ALT-ST20 includes two connecting plates that can accommodate doors weighing up to 20kg.



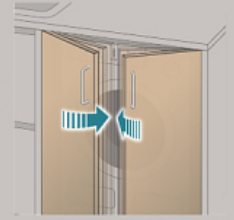
Pocket Door System / ALT-ST

Available Door Sizes

The ALT-ST series includes 4 models.
Please base selection on door size and storage space.

Soft-close Motion

For quiet operation and high-class appeal. Also, reduces risk of finger injury.



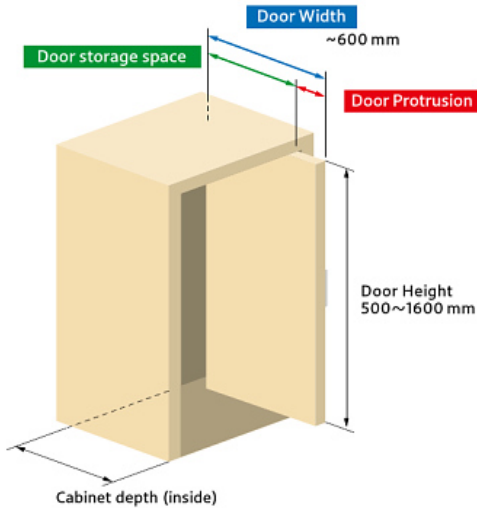
Door Weight: Max. 15 kg

Door Height : 500~1600 mm

More door storage space & reduced door protrusion.

[How to determine how far the door will protrude]

$$\text{Door Protrusion} = \text{Door Width} - \text{Door storage space}$$



Overlay Type

ALT-ST15-D10

Overlay on side board: 10 mm

Last 2 digits of the item number	Cabinet depth (inside)	Door storage space
16	420	315
19	496	391
22	572	467
24	623	518
28	725	620

The top and bottom boards are not overlaid by the doors.



Inset Type

ALT-ST15-D360

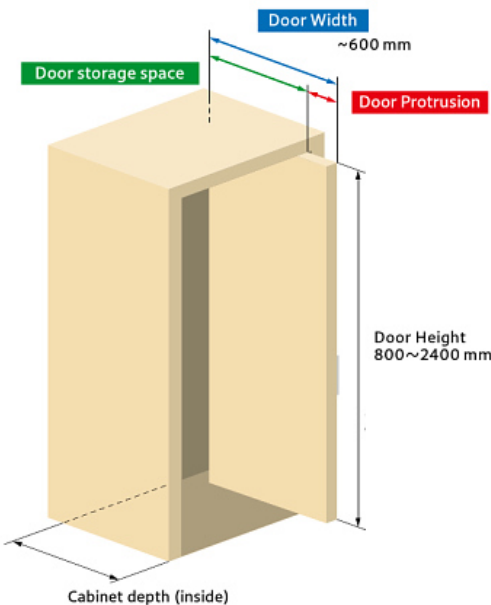
Last 2 digits of the item number	Cabinet depth (inside)	Door storage space
16	412 + Door thickness	316 + Door thickness
19	488 + Door thickness	392 + Door thickness
22	564 + Door thickness	468 + Door thickness
24	615 + Door thickness	519 + Door thickness
28	717 + Door thickness	621 + Door thickness

Door Weight: Max. 20 kg

Door Height : 800~2400 mm

[How to determine how far the door will protrude]

$$\text{Door Protrusion} = \text{Door Width} - \text{Door storage space}$$



Overlay Type

ALT-ST20-D10

Overlay on side board: 10 mm

Last 2 digits of the item number	Cabinet depth (inside)	Door storage space
16	420	268
19	496	344
22	572	420
24	623	471
28	725	573

The top and bottom boards are not overlaid by the doors.



Inset Type

ALT-ST20-D360

Last 2 digits of the item number	Cabinet depth (inside)	Door storage space
16	412 + Door thickness	269 + Door thickness
19	488 + Door thickness	345 + Door thickness
22	564 + Door thickness	421 + Door thickness
24	615 + Door thickness	472 + Door thickness
28	717 + Door thickness	574 + Door thickness

Recommended door thickness depends on your cabinet type. (See guidelines below):

- Overlay Type : 18~20 mm
- Inset Type : 18~30 mm

Wide lineup of Pocket Door System Hardware

We have a wide variety of pocket door systems that accommodate multiple door sizes and weights.
Most systems have soft-close functionality for quiet operation, safety and a better user experience.

More Info



For Medium Sized Doors

New Soft Close

ALT-ST20-D10

Overlay Type

Width : Max 600 mm
Height : 800 ~ 2400 mm
Thickness : 18 ~ 20 mm

New Soft Close

ALT-ST20-D360

Inset Type

Width : Max 600 mm
Height : 800 ~ 2400 mm
Thickness : 18 ~ 30 mm

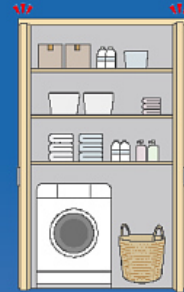
TSSL-2V

Inset Type

Width : Max 800 mm
Height : 1760 ~ 2300 mm
Thickness : 18 ~ 30 mm

Weight

20 kg



15 kg

New Soft Close

ALT-ST15-D10

Overlay Type

Width : Max 600 mm
Height : 500 ~ 1600 mm
Thickness : 18 ~ 20 mm

New Soft Close

ALT-ST15-D360

Inset Type

Width : Max 600 mm
Height : 500 ~ 1600 mm
Thickness : 18 ~ 30 mm

For Small Doors

ALT-2V-10

Overlay Type

Width : Max 600 mm
Height : 830 ~ 2300 mm
Thickness : 18 ~ 20 mm

Soft Close

ALT-2V-360

Inset Type

Width : Max 600 mm
Height : 820 ~ 2300 mm
Thickness : 18 ~ 30 mm

ALT-F

Inset Type

Width : Max 450 mm
Height : Max 2400 mm
Thickness : 23 ~ 30 mm

10 kg



Follow us on Social Media



SUGATSUNE KOGYO CO.,LTD.
Manufacturer of **LAMP** brand Products

Global Headquarters

SUGATSUNE KOGYO CO., LTD.
TOKYO OFFICE & SHOWROOM

<https://global.sugatsune.com/global/en/>
Phone +81-3-3866-2260
E-mail:export@sugatsune.co.jp

North America

SUGATSUNE AMERICA, INC.
LOS ANGELES MAIN OFFICE

<https://www.sugatsune.com/>
Phone +1-310-329-6373
E-mail:sales@sugatsune.com

CHICAGO MIDWEST
DISTRIBUTION CENTER

Phone +1-630-317-7072
E-mail:sales@sugatsune.com

SUGATSUNE CANADA, INC.
MONTREAL OFFICE

<https://www.sugatsune.ca/>
Phone +1-514-312-5267
E-mail:support@sugatsune.ca

Europe

SUGATSUNE KOGYO(UK)LIMITED
READING OFFICE

<https://www.sugatsune.co.uk/>
Phone +44-1189-272-955
E-mail:sales@sugatsune.co.uk

SUGATSUNE EUROPE GmbH
DÜSSELDORF OFFICE & SHOWROOM

<https://global.sugatsune.com/eu/en/>
Phone +49-211-53812-900
E-mail:sales@sugatsune.eu

Asia

SUGATSUNE SHANGHAI CO., LTD.
SHANGHAI OFFICE & SHOWROOM

<https://global.sugatsune.com/cn/zh-cn/>
Phone +86-21-3632-1858
E-mail:lamp@sugatsune.com.cn

GUANGZHOU OFFICE

Phone +86-20-6639-3554
E-mail:lamp@sugatsune.com.cn

SUGATSUNE KOGYO INDIA PRIVATE LIMITED
MUMBAI OFFICE & SHOWROOM

<https://global.sugatsune.com/in/en/>
Phone +91-9867299597
E-mail : sales@sugatsune.in

DELHI OFFICE & DISPLAY STUDIO

Phone +91-9867299597 / +91-11-45093636
E-mail:sales@sugatsune.in

SUGATSUNE KOREA CO., LTD.
INCHEON OFFICE

<https://global.sugatsune.com/kr/kr/>
Phone +82-32-220-0603
E-mail:sales@sugatsune-korea.co.kr